

RECLOSABLE FASTENER FOR MOUNTING EZOBORD PANELS



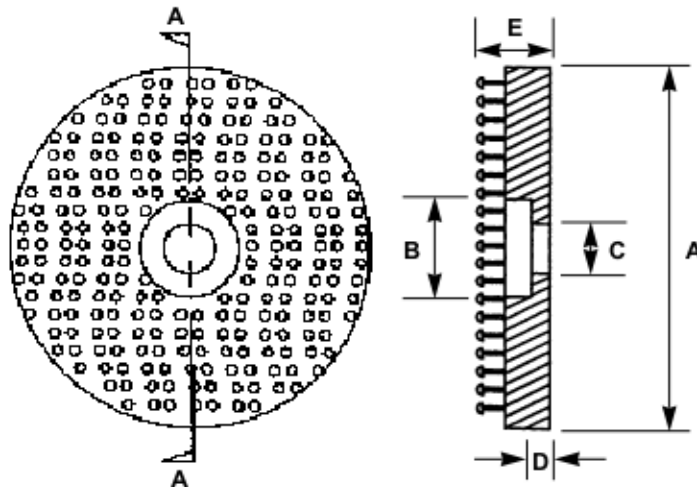
Technical Data

General Description

Reclosable Fastener is a fastener having a Type 250 stem pattern. When two pieces of Reclosable Fastener are pressed together, the mushroom heads interlock with one another to form a secure fastening attachment. To open simply pull apart. Reclosable Fastener is a round, 11/8 in. (28.5 mm) diameter fastener with a counter-sunk center hole. This allows easy attachment to the backside of the ezoBord sheet or panel using a pan-head screw (suggested screw size: # 6 3/8"). The head of the screw must be recessed below the bottom of the mushroom stems to allow proper engagement of the mushroom heads.

Typical Physical Properties and Performance Characteristics

Note: The following technical information and data should be considered representative or typical only and should not be used for specification purposes.



	DIM A	DIM B	DIM C	DIM D	DIM E
Inches:	1.12	0.31	0.16	0.06	0.24
Tolerance / Inches ±:	.030	.010	.010	.015	.020
Millimeters:	28.5	7.9	4.1	1.5	6.0
Tolerance / mm ±:	0.8	0.25	0.25	0.38	0.5

Nominal Engaged Thickness - Inches (mm)

.42" / 10.7mm